

Fruitland Mutual Water Company

253-848-5519
Fruitlandwater.com

Water Quality Improvement & Other Work Continuing

Each year, Fruitland Mutual Water Co. members elect several Board of Directors from a slate of candidates. The nominees may be new or existing Board Members seeking re-election. If you would like to serve on the board of Fruitland Mutual Water Co., or have a candidate to nominate, please send the candidate name to our office. Eligible candidates must be members of the Fruitland Mutual Water Co. in order to qualify for consideration. Prior to submitting a nomination, it is required for the candidate's permission be granted, along with the signature of two additional Fruitland members for validation. Please include a brief biography and qualifications of the nominee. In order for the preparation of the ballot, please submit your nominations as early as possible. Proposals for bylaw changes can be

received for review by the Board of Directors. Proposed changes must be accompanied by signatures of at least two members. All nominations and proposals must be received at the Company office (4001 9th St SW) no later than **4:30pm on January 4th, 2021.**

We look forward to another successful year! Thank you to our current Board Members:

- Scott Duda*
President
- Tim Larson*
V. President
- Gordon Flath*
Secretary/Treasurer
- Colleen Wise*
Director
- Paul Blinn*
Director
- Marlin Horeis*
Director
- Dwayne Farmer*
Director

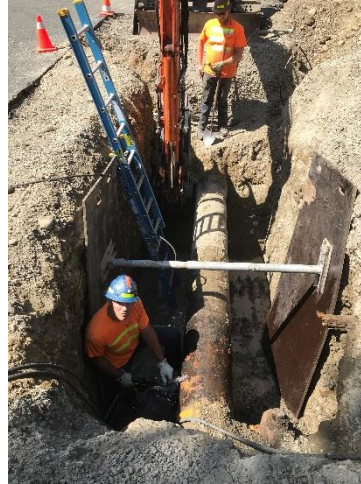
Winter is Coming!

As cold weather sets in, take a few precautions to winterize your home. When we begin to have sustained temperatures of 30° F. or lower, homeowners should be alert to the possibility of freezing pipes.

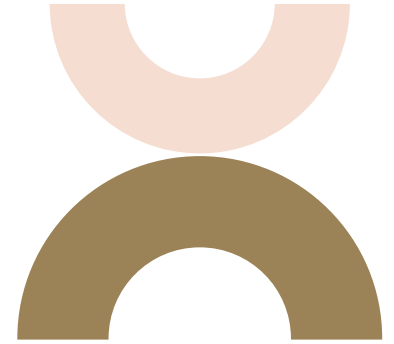
Here are a few tips to avoid freezing pipes this winter:

- Disconnect and drain outdoor hoses and sprinkler lines.
- Insulate pipes or faucets in unheated areas like garages, attics, crawlspaces, etc.

- Seal off access doors, air vents, and cracks.
- In extremely cold weather, consider leaving a trickle of water running.
- Open cabinet doors to circulate warm air.
- Know where your master shut-off is in case of an emergency.
- Keep your thermostat set to at least 55° F., even if you are not home.



Fall 2020 Newsletter



American Water Works Association
Pacific Northwest Section



New Additions to Fruitland Water:

Deer Ridge Memory Care Center at 5th St. & 39th Ave SE.

Medical building located at 30th & Meridian

Affinity Senior Living Center at 43rd Ave & 5th St SE.

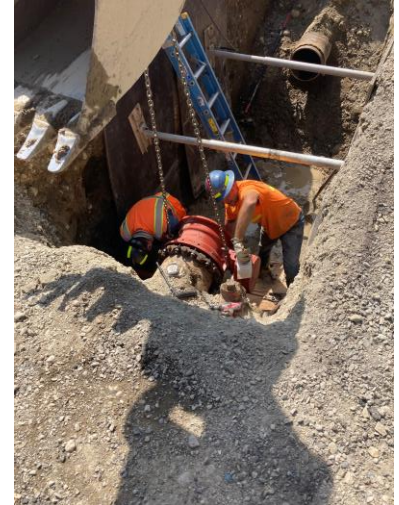
Roger's Landing: 11 single family homes at 86th Ave & 125th St

Sunrise Corner: 47 single family homes at 82nd Ave & 128th St

La Quinta Inn coming soon at located at 39th Ave & 9th St SW

Berger Short Plat located at Woodland Ave & 125th St E

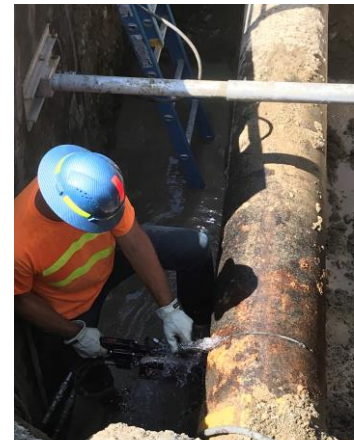
Jordan Ridge located at 80th Ave & 115th St E



Square Footage Fees

A membership entitles you to receive water service from the Fruitland Mutual Water Company. The membership fee applies to the first 2,000 square feet of enclosed, roofed, or covered area of structures on your property. Any area above the 2,000 square feet or additional structures on the same property will be subjected to the \$2.50 per square foot assessment. If a building permit is required, the permit will provide the square footage in which the assessment will be based.

The square footage policy has been in effect since 1983 and is set forth in the bylaws of the Fruitland Mutual Water Company. If you have any questions or would like a copy of the bylaws, please feel free to call the office or visit our website.



A Word from our General Manager



Ted Hardiman, General Manager

The obvious elephant in the room this year has been COVID-19. The water company is obviously considered an essential utility and has operated as both you, as customers, and the WA State Department of Health expects us to. In early March, the Board made the decision to close the office. Management split the crew hours into two separate shifts to minimize contact. The office staff worked from home for the first couple of months until modifications were made in the office to make it safer. We have implemented social distancing, the use of face masks, and sanitation guidelines as recommended by the CDC. Fruitland does not anticipate opening the

office to the public anytime soon, it likely will be sometime in 2021.

The placement of a new generator capable of running our largest well site and powering the office and shop simultaneously was approved by management, engineering, and the Board of Directors. The existing generator has been repurposed at another well site. We have increased backup and redundancy in our system for use in the event of future extended power outages.

This winter, the field crew will be clearing around meter boxes and fire hydrants. If you have sensitive vegetation, please let the office know so we can make a note of it. We will be clearing approximately 3 feet around meters and hydrants. Thank you for your understanding in the importance of access to these critical parts of the company's infrastructure.



